

natural

READIWALL LINING PANEL



Readiwall
LINING PANEL

Australian
HARDBOARDS

THE NATURAL CHOICE

KEY APPLICATIONS

Readiwall is an excellent interior lining material particularly where strong, flexible materials are required and a paint finish is specified. It is suitable for:

- Lining timber or metal framed walls and ceilings
- Renovating existing walls of timber, plasterboard, asbestos cement, fibrous plaster, and masonry
- Structural bracing of timber framed walls to resist wind forces
- Lining built-in wardrobe and cabinet units
- Flush panel partition and door assemblies, and as infills in proprietary sliding wardrobe door systems
- Displays, signboards and the lining of timber or metal framed exhibition stands

MAIN FEATURES

Readiwall is 5.5mm thickness, reduced density hardboard with a professional applied primer sealer coating on the smooth face surface. The back of the sheet is planed and the long edges are bevelled. Readiwall is moisture conditioned during manufacture and under normal weather conditions it is ready to use. The base material complies with AS 1859.4, the prime sealer surface coating is evenly applied, light grey in colour and an alkyd resin. It is compatible with most solvent borne and latex type domestic and industrial paints. The uniform surface ensures that undercoats and finish paint coatings are easily applied and have good key.

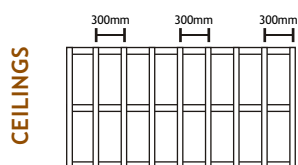
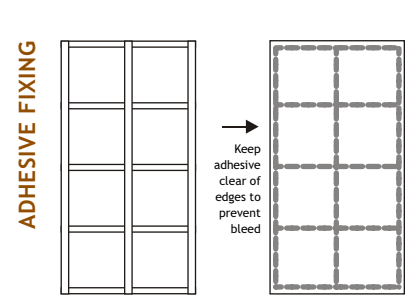
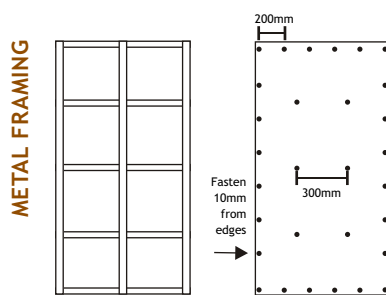
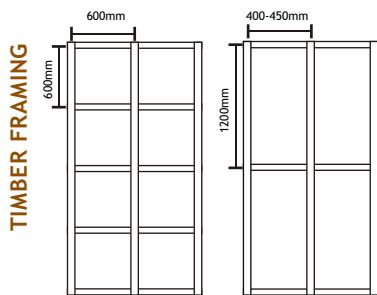
PRODUCT DETAILS

PRODUCT DETAILS	THICKNESS, +/- 0.15mm 5.5mm	WIDTHS, mm +/- 3mm 900 1200	LENGTHS, mm +/- 3mm 1800, 2400, 2700 1800, 2100, 2400, 2700, 3000, 3600	No. SHEETS per pack 50
PROPERTIES	PROPERTY Density (typically) Mass/Unit Area Modulus of Rupture Modulus of Elasticity	TYPICAL VALUE 960 kg/m ³ 5.3 kg/m ³ 30 MPa 4000 MPa	PROPERTY Impact Strength Internal Bond Strength Thermal Conductivity Hygro-Expansivity	TYPICAL VALUE 4000 J/m ² 1000 kPa 0.18 W/(m,K) 0.25% Change in face dimensions over 50% to 90% relative humidity.
EARLY FIRE HAZARD PROPERTIES	IGNITABILITY INDEX 14	SPREAD OF FLAME INDEX 7	HEAT EVOLVED INDEX 6	SMOKE DEVELOPED INDEX 3
PACKAGING AND SUPPLY	Sheets are packed face upwards and strapped to a disposable timber pallet. The top sheet is turned face down. The delivery time is dependant on location. Check with our Customer Service Office, distributor or reseller at the time of placing the order for information. Store flat, under cover on a horizontal pallet or on supports spaced at 450mm centres. Do not leave in direct sunlight. Cover with waterproof materials to prevent water staining.			
SOUND TRANSMISSION	The sound attenuation of 5.5mm reduced density hardboard was tested to ASTM E 90-66T and ISO Recommendation R140. For the test, the hardboard was applied to both sides of 100mm x 50mm oregon studs at 406mm centres, STC-35.			
MOISTURE AREAS	Readiwall should not be used in areas subject to direct contact with water, such as splashbacks and shower recesses.			
DAMP BUILDINGS	Do not fix Readiwall sheets to walls, which are permanently, or intermittently showing signs of dampness. The cause of moisture must be corrected and the walls allowed to dry before installing.			
VAPOUR BARRIERS	If using a vapour barrier, such as plastic film or aluminum foil place it on the warm side of the wall frame to avoid condensation within the wall cavity, i.e. Under internal linings in regions which experience cold temperature conditions. Please obtain specialist advice when locating vapour barriers in buildings in hot or tropical zones or where cooling or humidity control equipment is installed.			
PREPARATION	Under normal climatic conditions Readiwall will not require wetting as for Masonite Standard. The sheets may be erected as received. Where extremes of either high humidity or high temperature combined with low humidity are prevailing, it is desirable that Readiwall be removed from the crate or stack and exposed to the atmosphere by loosely stacking around the walls, for about 24 hours. The alternative to loose stacking is to fix the sheets temporarily in position on the wall and leave for about 24 hours before final fixing.			
CUTTING AND MACHINING	Readiwall is easy to work and machine with normal woodworking tools and equipment. Cut sheets with a fine tooth handsaw or power saw. Edges may be trimmed with a smoothing plane, power plane or sandpaper. Where holes are required clean cutter bits or twist drills are satisfactory.			



FIXING AND INSTALLATION PROCEDURES

TIMBER FRAMING	Timber frames should conform to local building regulations. The best results are obtained where the timber frame is of one species, seasoned, accurately gauged to width and framed up without deviation.
WALLS	Space studs at 400mm centres for 1200mm wide sheets and 450mm centres for 900mm wide sheets. One row of horizontal noggling is usually satisfactory for a 2745mm wall height. Support should be provided for all sheet edges.
CEILINGS	For best results, fix 50mm x 25mm, dressed and gauged, timber battens at 300mm centres to ceiling joists. Pack battens to a true and level plane and provide trimmers to support sheet ends.
METAL FRAMING	Erect metal wall frames in accordance with the manufacturers recommendations. Studs should be spaced at the centres specified for timber framing.
EXISTING WALLS	Remove any fixture likely to interfere with the installation. Straighten and level the framework, and fix additional studs or noggling where required. Existing linings, i.e. Plasterboard, fibrous plaster, timber lining boards, cement or plaster rendered walls should be flat, clean and dry. To allow Readiwall to be fixed with adhesive, remove any loose or flaking surfaces by wire brushing. Fill any large hollows in cement or plaster rendered walls with plaster patching compounds. Concrete and masonry walls should be sealed against moisture penetration with a suitable damp course.
JOINING	The long edges of the sheets are bevelled for "V" joining. Fix sheets vertically with a 1mm gap between adjoining sheet edges. Allow approximately 6mm clearance at edges and corners with timber, aluminum or plastic mouldings.
NAILING	Readiwall may be fixed to timber frames with 25mm x 1.6mm hardboard nails (panel pins), preferably cadmium plated. Space nails at 300mm centres through the body of the boards and 100mm centres along sheet edges, at least 10mm from the edge. Nails should be set slightly below the sheet surface.
ADHESIVE FIXING	Wallboard or construction adhesives are generally suitable for fixing Readiwall to wall frames or existing walls. Surfaces to be bonded must be clean and dry. Always use adhesives in accordance with the manufacturer's recommendations. <i>Procedure:</i> Apply sufficient adhesive to fix one sheet, to framing members or existing walls, in continuous beads about 5mm in diameter and at 450mm maximum centres. Locate sheet in its correct position as soon as the adhesive has been applied, and where possible, temporarily fix with two hardboard nails at the top edge. Press the sheet firmly against the frame or wall to transfer half of the adhesive to the back edge of the Readiwall. Using the hardboard nails at the top edge as a hinge, pull bottom of sheet about 200mm away from the wall and block out. Allow the adhesive to become touch dry. Carefully reposition the sheet against the frame then hammer over the adhesive areas using a felt faced block and hammer. Do not allow any excess adhesive to harden. Remove with a soft cloth dampened with mineral turps, kerosene or water depending on the adhesive type. Fix subsequent sheets to the sequence described.
FIXING TO METAL FRAMES	Readiwall may be mechanically fixed to metal frames with countersunk head, pop rivets, self drilling or metal thread screws. Best results are achieved where Readiwall is predrilled and countersunk to receive the fasteners. Space the fasteners at 200mm centres at sheet edges, 10mm from the edge, and at 300mm centres at intermediate studs. The use of adhesive in conjunction with mechanical fasteners will allow the fastener spacing to be increased. Alternatively Readiwall may be fixed to rigid metal framing with adhesive. Ensure the frame is free of oil or grease.



PAINTING	Readwall is supplied prime sealed. Stop up holes with proprietary filler then lightly sandpaper the surface. Apply finish coats by roller coater, brush or air spray. Flat, low gloss, semi gloss or full gloss recognised quality paints may be used. Lightly sand between coats. Ask your paint supplier for recommendations on the best type of paint for your application.
STRUCTURAL WALL BRACING	Timber wall frames may be erected with Readwall to resist racking under the effects of external wind pressure. For bracing purposes only, fix sheets with 25mm x 2.8mm galvanised clouts to achieve a design racking strength of 1.8kN/m. Use 30mm x 2.8mm galvanised clouts for softwood frames, such as pinus radiata. Space clouts at 100mm centres at top and bottom plates and sheet edges. 300mm centres at intermediate studs. The stud spacing should not exceed 600mm centres. Readwall can also be used for the dual purpose of bracing and internal lining. When fixing to the studs, substitute 25mm x 1.6mm.

HEALTH AND SAFETY WARNING

Inhalation of dust generated from processing Readwall may cause irritation and sensitisation by inhalation (asthma) and by skin contact (dermatitis). Repeated inhalation of wood dust increases the risk of nasal cavity cancer and of lung fibrosis (scarring). Do not breathe dust. Wear a respirator if using power tools. Call Customer Service on 1300 366 681 for a Material Safety Data Sheet.



It is our intention to maintain a sustainable, environmentally responsible business that respects the quality of the environment and uses resources efficiently.

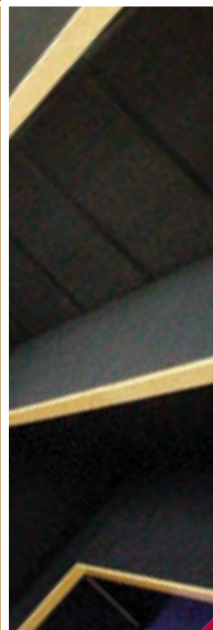


THE NATURAL CHOICE

Australian Hardboards Ltd ABN 40 088 183 420.
 Conditions of Sale: Australian Hardboards products and services are sold on our terms and conditions, copies of which can be obtained through our Customer Service Centre.

Currency of Information: In the interests of continuing product improvements, Australian Hardboards Ltd reserves the right to change or alter specifications and/or products contained within this publication at any time as deemed necessary.

Information contained within this publication should not be used as an infallible guide to specifications and/or product performance. Colours and finishes are as accurate as conventional printing processes will allow. Computer generated images and technical drawings are not to scale unless otherwise noted.



Readwall
 LINING PANEL



Australian
HARDBOARDS

THE NATURAL CHOICE

Australian Hardboards Limited
 PO Box 139, Ipswich Qld, 4305 Australia
 Ph: 1300 366 681 Fax: 1800 666 081

info@australianhardboards.com.au
 www.australianhardboards.com.au

READY TO HANG AND PAINT WALL LINING MADE SIMPLE



READIWALL LINING PANEL

Readiwall
LINING PANEL

Australian
HARDBOARDS

THE NATURAL CHOICE



READIWALL LINING PANEL

Readiwall Lining Panel is made from environmentally friendly hardboard with an applied professional primed sealer coating on the smooth face surface. The panels are moisture conditioned during manufacture and under normal weather conditions are ready to install and paint.

Readiwall panels are a high impact resistance board for walls and ceiling in internal applications. All boards have a bevelled edge along both long sides for ease of alignment when installing.

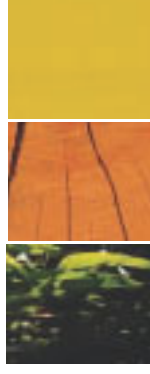
Complying with Australian Standard 1859, Readiwall is 5.5mm thickness and comes in a range of sheet sizes. The primed sealer surface coating is evenly applied and is compatible with most oil or water based quality paints.

The uniform surface ensures that you achieve a professional finish with minimal preparation.

READIWALL HANDLING

- Material Safety Data Sheet is available from 1300 366 681 or www.australianhardboards.com.au
- Always use a face-mask when cutting Masonite Hardboard.

It is our intention to maintain a sustainable, environmentally responsible business that respects the quality of the environment and uses resources efficiently.



natural

Australian Hardboards Ltd ABN 40 088 183 420.
Conditions of Sale: Australian Hardboards products and services are sold on our terms and conditions, copies of which can be obtained through our Customer Service Centre.

Currency of Information: In the interests of continuing product improvements, Australian Hardboards Ltd reserves the right to change or alter specifications and/or products contained within this publication at any time as deemed necessary.

Information contained within this publication should not be used as an infallible guide to specifications and/or product performance. Colours and finishes are as accurate as conventional printing processes will allow. Computer generated images and technical drawings are not to scale unless otherwise noted.

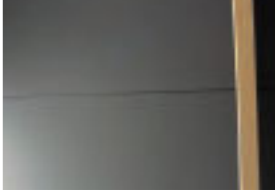


Readiwall
LINING PANEL

Australian
HARDBOARDS

THE NATURAL CHOICE

Australian Hardboards Limited
PO Box 139, Ipswich QLD, 4305 Australia
Ph: 1300 366 681 Fax: 1800 666 081
info@australianhardboards.com.au
www.australianhardboards.com.au



APPLICATIONS

Readiwall is suitable for:

- Domestic housing, rumpus rooms, special needs housing, school assembly, sporting halls, and waiting rooms
- Renovating existing walls of timber, plasterboard, fibre cement, fibrous plaster, and masonry
- Any area inside a building where pleasing aesthetics with a painted finish and/or high impact resistance is required. Readiwall is not suitable for wet areas.

Joint Applications:

- Readiwall can be installed vertically or horizontally.
- Cover horizontal joints with a Dado mould or picture rail.



PRODUCT TABLE

THICKNESS	LENGTH	WIDTH
5.5mm	1800	900/1200
	2400	900/1200
	2700	900/1200
	3000	1200
	3600	1200

READIWALL FIXING

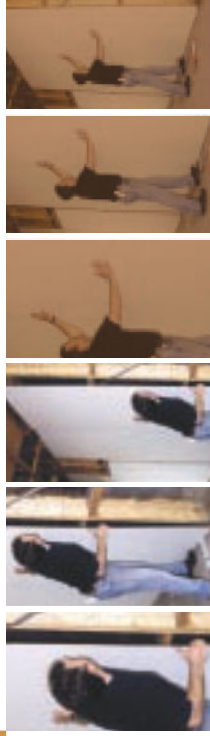
- Sheets may be installed on walls by using construction adhesive only.
- Apply construction adhesive in accordance with manufacturer's instructions—usually 5mm in diameter continuous beads and at 450mm maximum centres.
- Plumb the first sheet using a spirit level.
- Allow a 5mm gap at the floor and ceiling covering with timber, aluminium or plastic mouldings.
- Allow 1.0mm to 1.5mm expansion gap between adjoining sheets for structural movement.
- Fix subsequent sheets to the sequence described.
- When installing with fasteners use 25mm x 1.6mm hardboard cadmium plated nails spaced at 300mm centres through the body of the board and 100mm centres along sheet edges, at least 10mm from the edge.
- Use countersunk head, pop rivets, self drilling or metal thread screws when fastening to metal frames.
- Space the fasteners at 200mm centres at sheet edges, 10mm from the edge, and at 300mm centres at intermediate studs.
- In all applications, fasteners should penetrate studs or battens.
- Internal corners can be finished off with a timber moulding or similar.

READIWALL FINISHING

- Readiwall panels are primed ready for painting. Ask your paint supplier for recommendations of the best type of paint for your application.
- All screw or nail holes would be filled with building filler before painting. Follow the manufacturers recommendations.
- Apply finish coats by roller, brush or air spray. Flat, low gloss, semi gloss or full gloss solvent borne or latex type paints may be used. Lightly sand between coats.
- Dado rails are available for covering horizontal joints.

READIWALL PREPARATION

- Under normal climatic conditions Readiwall may be erected as received. In extremes of humidity and temperature areas it is desirable for the sheets to be acclimatised in the area where they are to be installed for 24-48 hours prior to installation.
- Frames should be straight and true
- Studs should be spaced at 400mm centres for 1200mm wide sheets and 450mm centres for 900mm wide sheets.
- One row of horizontal noggin is usually satisfactory for a 2745mm wall height. Support should be provided for all sheet edges.
- When using Readiwall in ceilings, space battens at 300mm centres to ceiling joists. Pack battens to a true and level plane and provide trimmers to support sheet ends.
- When installing over masonry, fix horizontal furring channels or battens at 450mm centres to the masonry.
- When installing over metal framing, studs should be spaced at the centres specified for timber framing.



READIWALL - READY TO HANG AND PAINT, WALL LINING MADE SIMPLE